



Mobile Builder

SIMPLIFY THE PAPER TRAIL

In response to the needs expressed by clients, Trimble Forestry has created the Trimble® Forestry Mobile Builder that can be used with a wide variety of handheld devices. Mobile Builder allows forestry clients to mobilize business processes allowing workers access to the enterprise on multiple platforms such as Apple's iOS, Google's Android and Windows Embedded.

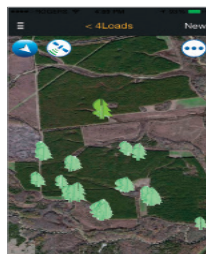
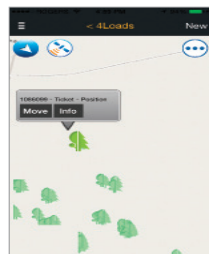
Why Trimble Forestry Mobile Builder? Simple! It has proven advantages over paper-based processes. Specifically, it reduces the need for data reconciliation; provides tighter control over harvest operations, inspections or surveys; and reduces data administration while jointly improving data integrity from field to office.

The Trimble Forestry Mobile Builder consists of the Mobile Server and a Mobile Client. The

Server synchronizes field data with Mobile Client applications built using Mobile Builder. Administrators can quickly configure mobile forms for any type of business process that is better managed on the go and rapidly deploy to the user community. Mobile Builder can also integrate business processes directly with Trimble Forestry's Land Resource Manager, enterprise solution. Mobile Builder can support solutions that require both tabular and spatial data types in a cohesive way.

Key Features

- ▶ Downloadable App or Enterprise Version
- ▶ Configure any type of attribute
- ▶ Manage drop down values centrally
- ▶ Deploy changes centrally
- ▶ Capture GPS locations
- ▶ Map features
- ▶ Configure Signature panels
- ▶ Link photos to records
- ▶ Control security centrally
- ▶ Does not require connectivity
- ▶ Data synchronizes back to server



Mobile Builder SIMPLIFY THE PAPER TRAIL

Mobile Integration

The flexibility of Mobile Builder ensures the applications match the exact requirements of the tasks at hand. Whether the requirement is a simple field inspection, survey, or audit, the mobile applications are configured to simplify the recording of various types of field data. Mobile Builder is ideal for tracking information which will enter the accounting system or results in payments or the capture of images, sketches and signatures needed to describe or validate a transaction.

Mobile Flexibility

Mobile Builder supports the most commonly used mobile platforms including Apple's iOS, Google's Android and Microsoft's Windows Embedded, enabling field users to effectively use Mobile Builder as the solution for their data collection needs. This allows clients to select the handheld device most suitable for their application whether it is an inexpensive smart phone for inspection applications or a ruggedized mobile device designed for more demanding environments.



SMARTPHONE SOLUTIONS

- ▶ Load tracking
- ▶ Pre and post harvest inspection
- ▶ Job tracking
- ▶ Harvesting compliance
- ▶ Planting Assessment

The Benefits

Streamline Data Capture

- ▶ Use Trimble Forestry Mobile Builder to align your field collection needs with your enterprise system
- ▶ Decrease the need for translating field data to enterprise data
- ▶ Spend less time cleaning your field data

Improve Field Collection Accuracy

- ▶ Improve the accuracy and increase the speed for incorporating new field information into your daily business decision-making
- ▶ Validate data at the field and before it gets loaded into the enterprise

Make Better Decisions

- ▶ Having access to timely and accurate information will help you make better decisions every day

Save Time and Money

- ▶ Making the right decisions with accurate and timely information saves you and your company time and money



Contact your local dealer today

CANADA
Suite 560,
1188 West Georgia Street
Vancouver BC, V6E 4A2
Canada
+ 1 604 697 6400 phone

forestrysales@trimble.com

USA
4100 SW Research Way
Corvallis, OR 97333
USA
+ 1 541 750 9200 phone

FINLAND
Niittykatu 8 A
02200 Espoo
Finland
+ 358 20 742 0600 phone

NEW ZEALAND
1372 Hinemoa Street
Rotorua, 3010
New Zealand
+ 64 7 348 0308 phone

THE CONNECTED FOREST