

L2P Suite User Guide

For Trimble Customer Admins

GLOBAL SERVICES
20 OCTOBER 2017

This L2P Suite User Guide describes the use of the L2P Suite to configure the L2P hardware devices. Instructions apply to L2Pp, L2Ppw, and all aftermarket kits. Below is a table of contents for quick navigation.

[Network Settings](#)

[Function Settings](#)

[Advanced Settings](#)

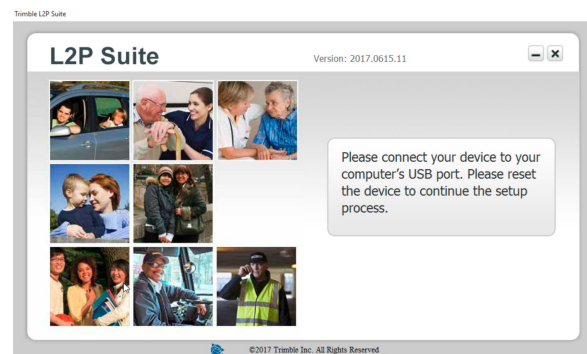
[Save Settings](#)

[File Settings](#)

Download and install the L2P Suite from Trimble.com

1. Reset the L2P device

- Connect the L2P device to a USB port.
- Insure the device is powered off by pressing the power button (see the red arrow) for three (3) seconds. The lights will remain on for approximately three (3) seconds.
- Reset the L2P device by press and hold the power button for 10 -12 seconds. An LED will flash rapidly.



2. Select *Proceed to set up*

Note: Disconnecting the battery prior to USB connection may allow the device to reset upon USB connection. You will be notified if the device has new firmware available. After the update disconnect the device and then reconnect. The IMEI may not display initially. Proceed with instruction list.

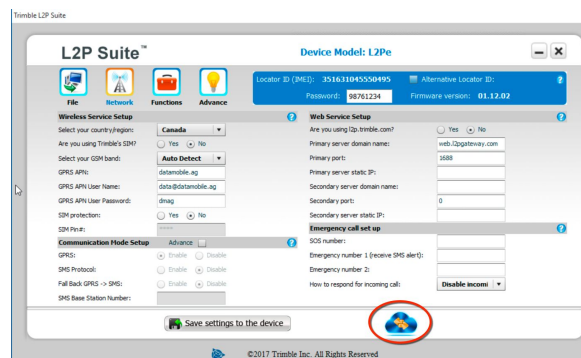


Visit TrimbleProtectedPartners.trimble.com

www.trimble.com

© 2017, Trimble Inc. All rights reserved. Trimble and the Globe & Triangle logo are trademarks of Trimble Inc. registered in the United States and in other countries. All other trademarks are the property of their respective owners. P/N 092917_L2PLocationNowUserGuide

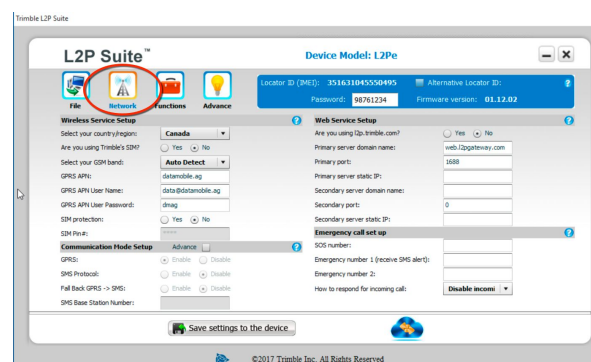
3. Select the circled icon to retrieve the current settings within the L2P device.



4. Network Settings

- a. **Wireless Service Setup:** select your country.
- b. **SIM Protection:** older units will be set to *no* and newer devices will be set to *yes*. Do not change the default setting.
- c. **Communication Mode Setup:** insure GPRS is enabled.
- d. **Web Service Setup:** insure the Primary server domain name is: *web.l2pgateway.com*.
- e. **Primary port:** 1688
- f. All other fields must be blank.

Note: The option settings shown are for the L2P embedded device within Trimble S series, Trimble C5 and Nikon XF instruments.

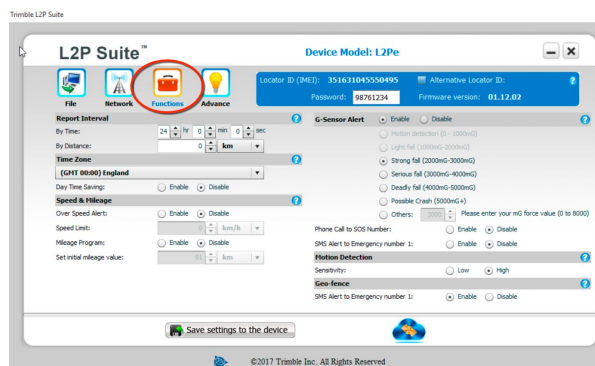


5. Function Settings

- a. **Report Interval:** select the reporting interval and distance interval. These values can be entered now or later on the AllTrak portal.

Note: Trimble recommends a charged instrument battery remain in the total station at all times after the L2P device has been activated. This will greatly increase the time an instrument can be tracked in the event it has been stolen.

- b. **G-Sensor Alert:** Enable G-Sensor alert. The value can be entered now or later on the AllTrak portal.

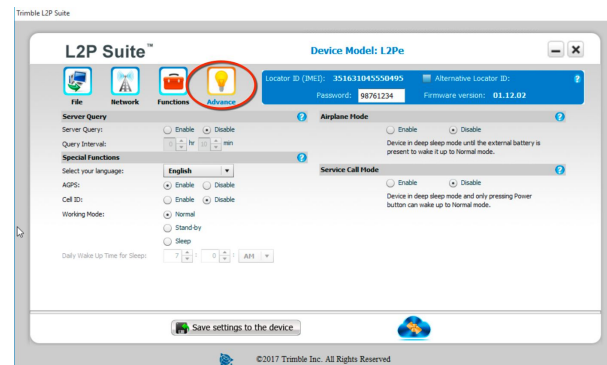


6. Advanced Settings

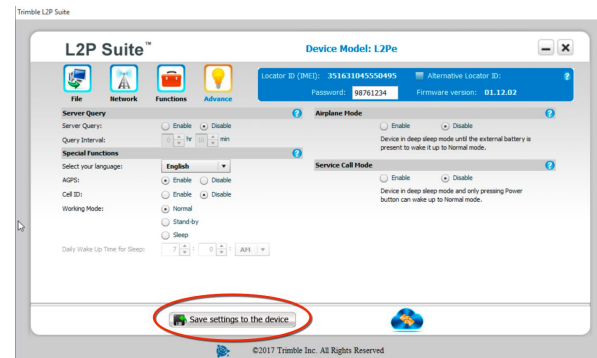
- Server Query:** it is critical that the server query be disabled.
- Special Functions:** enable AGPS positioning and set the working mode to *Normal*.
- Airplane Mode:** disable airplane mode.

Note: The L2P embedded units can be placed in Airplane mode. This sets the L2P device to sleep mode. Placing a battery in the instrument will return the L2P device to Normal mode.

- Service Call Mode:** disable service call mode.



7. Select Save settings to device



8. File Settings

- Save File:** the configuration settings can be saved to a file and stored.
- Select *Logout* to exit the program.

