

RT COMMANDER PRO SOFTWARE

IMPROVE NITROGEN PRESCRIPTIONS BY INCORPORATING HISTORICAL DATA INTO ON-THE-GO GREENSEEKER RATE DECISIONS

INTRODUCING THE NEW RT COMMANDER PRO SOFTWARE BY TRIMBLE

- Real time GreenSeeker® sensor vigor data used in conjunction with spatial historical zone data
- User created zone maps are pre-loaded into the Trimble® Nomad® handheld computer or Trimble Recon® handheld
- Increase, decrease or override sensor based rates depending upon what "zone" the applicator is operating in
- Allows crop consultant and ag retailers to develop real time sensor programs utilizing historical information currently provided to their customers
- Can be used to address yield potential differences due to varying seed populations and/or soil moisture differences in pivot irrigated fields

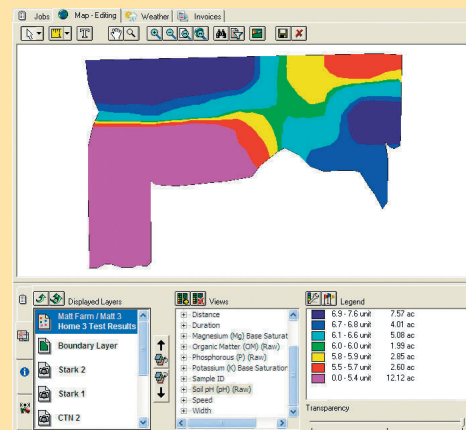


RT COMMANDER PRO FEATURES AND BENEFITS:

- User can now take into consideration soil and yield potential zone data into real time VRA decisions
- Simple shape file format required for zone maps
- More accurate rate decisions allow for higher yields and less input waste by adding historical data into rate decisions

RT Commander Pro software must be used with a RT200 Variable Rate Application System with PDA based user interface.

HISTORICAL DATA EXAMPLE: SOIL MAP



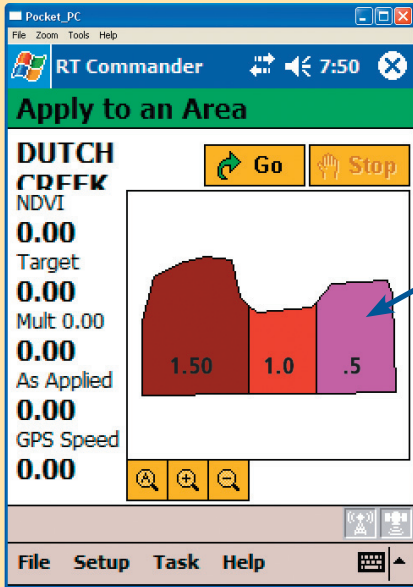
SIMULATED LIGHT EMISSION



Trimble Agriculture. The line everyone follows.

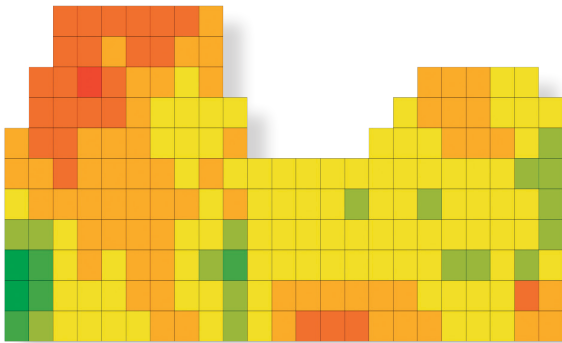
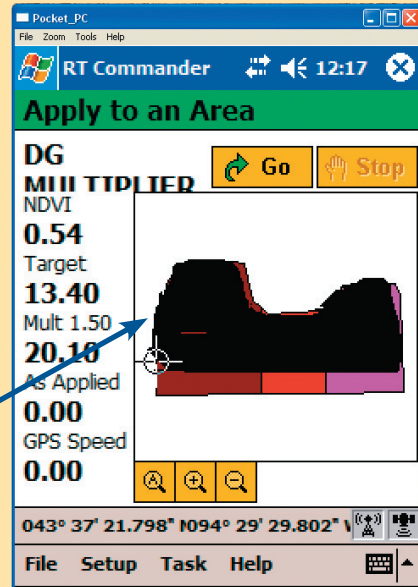
RT COMMANDER PRO SOFTWARE

APPLICATION RATES BASED UPON REAL TIME AND HISTORICAL DATA



MULTIPLIER OR
OVERRIDE
BY ZONE

REAL-TIME
COVERAGE MAP
OVERLAYS ZONES



EXAMPLE: STANDARD NDVI-BASED VRA

✓ Average Rate 9.4 Gallons/Ac

EXAMPLE: MULTIPLIER ZONE MODIFIED VRA

✓ Average Rate 10.5 Gallons/Ac

